

MODEL TLH-2450

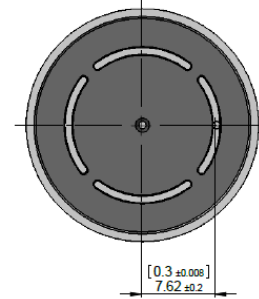
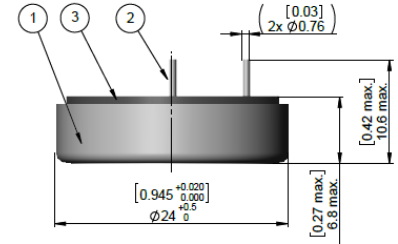
With insulating bottom disc

TECHNICAL DATA

(Typical values @+25°C for batteries stored for one year or less)

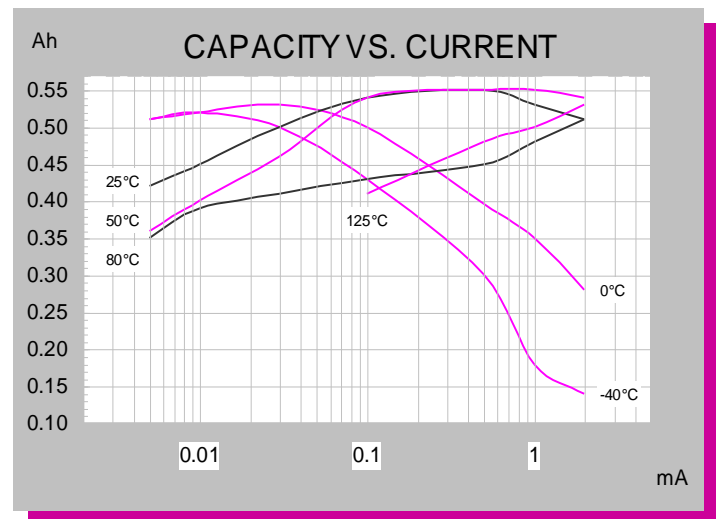
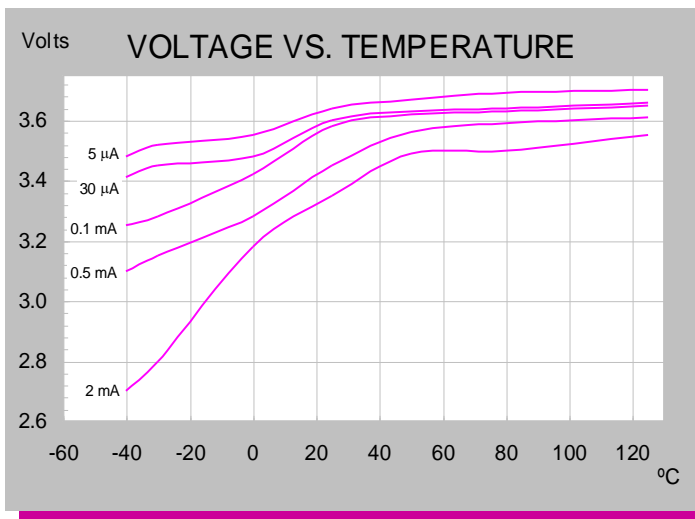
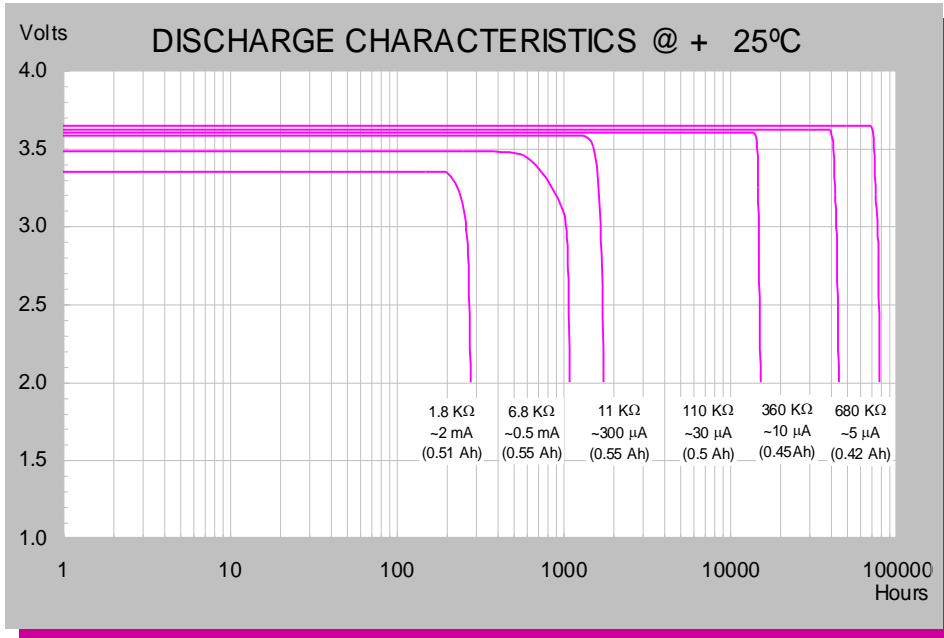
| | |
|--|-----------------|
| ■ Nominal capacity @ 0.5 mA, to 2V | 0.55 Ah |
| ■ Rated voltage | 3.6 V |
| ■ Maximum recommended continuous current | 5 mA |
| ■ Maximum pulse current capability | 10 mA |
| ■ Weight | 8.8g (0.310 oz) |
| ■ Volume | 2.60 cc |
| ■ Operating temperature range | -55°C to +125°C |
| ■ Maximum duration @ +150°C | 3 hours |
| ■ U.L. Component Recognition MH 12193 | |
| Li metal content | approx. 0.2g |

TADIRAN LITHIUM BATTERIES



ADDITIONAL INFORMATION

SUFFIX- /P TIN PLATED NICKEL PINS
CATALOGUE NO.: 15-2450-41530



For Tire Pressure Monitoring Systems

TLH-2450

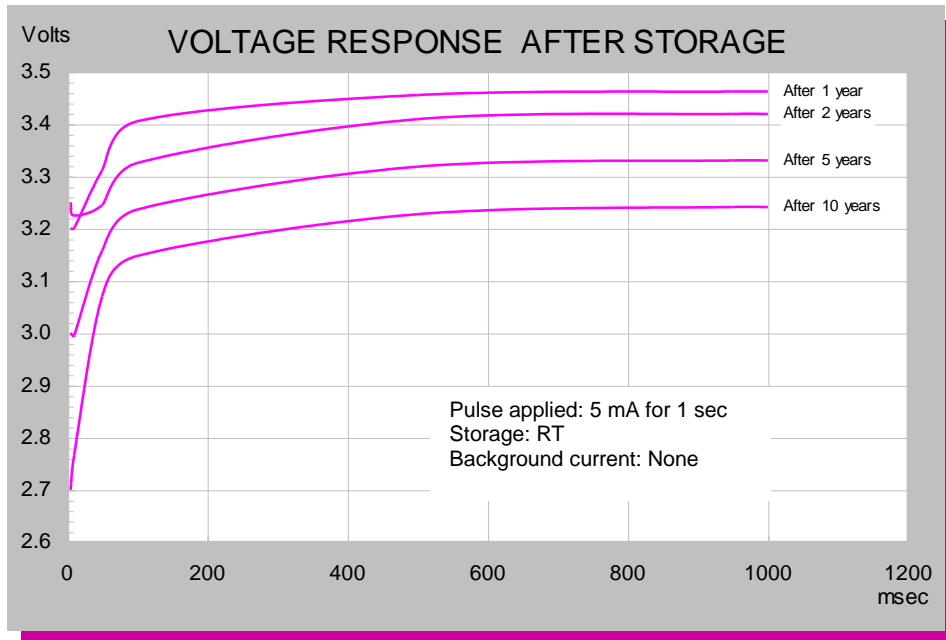
CELL FEATURES

- 3.6 V Primary lithium-thionyl chloride (Li-SOCl₂)
- Fast voltage recovery after long term storage and/or usage
- High energy density
- High and stable operating voltage
- Low self discharge rate
- Wafer construction
- Hermetic glass-to-metal-sealing
- Non-flammable electrolyte

TADIRAN LITHIUM BATTERIES

MAIN APPLICATIONS

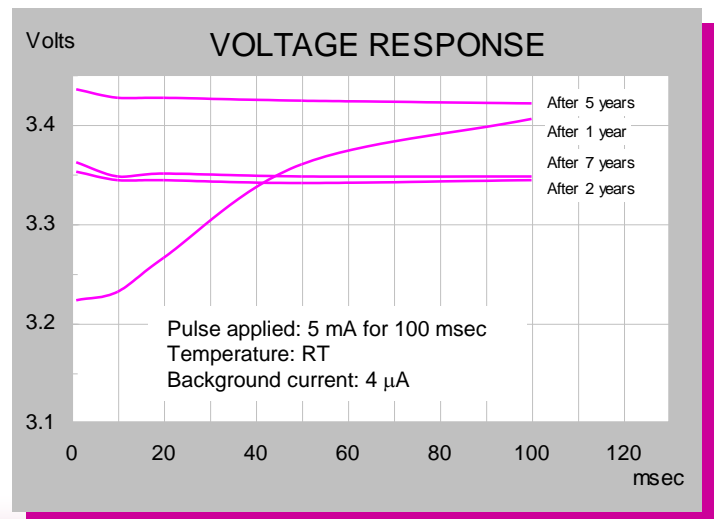
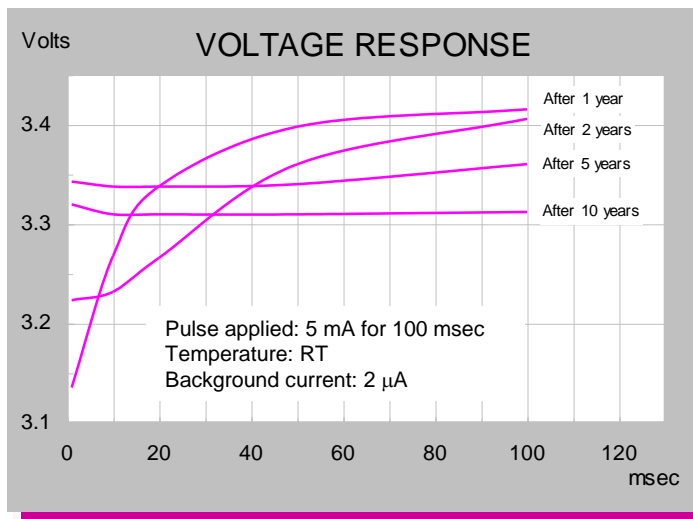
- TPMS -Tire pressure monitoring systems
- Industrial utilities at high operating temp -up to 125C
- others



STORAGE CONDITIONS

- Cells should be stored in a clean & dry (less than 30 % RH) area

For updated information please visit our website www.tadiranbat.com



For Tire Pressure Monitoring Systems